

eku 
Finestre a progetto

PROFILATI BH

ahead of all...



**EXPRESS
KATALOG**

- UVOD -

Sa ciljem da se pojednostavi koje serije profila i koji profili iz tih serija su na redovnom lageru u I. Sarajevu kreirali smo "EXPRESS" katalog.

U katalogu su sadržane osnovne informacije vezane za profile, poput karakterističnih dimenzija, pripadajućih pribora i sl.

Mi smo na lager postavili sve neophodne profile za tipologije koje biste mogli zahtijevati. Sve ostale serije profila, kao i profili koji nisu navedeni u ovom katalogu su dostupni za poručivanje u glavnom magacinu u Bolonji.

Pored lagera profila, uz njih na stanju držimo prateće pribore, gume, Stublina okov, Al limove (Al99,5) u raznim debljinama od 0.5 – 2.0 mm, a u tablama 1000x2000 mm, kao i određen asortiman standardnih profila.

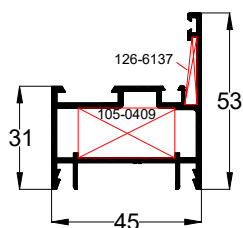
Sistemske profile su u dužinama od 6,5 m, a dok su za standardne profile i klupice profile u dužinama od 6 m .

Osim profila magacin posjeduje i pogon plastifikacije u kom sve naše profile tretiramo površinskom zaštitom u skladu sa Qualicoat standardom, čiju licencu posjedujemo za SEASIDE kvalitet.

EKU 53

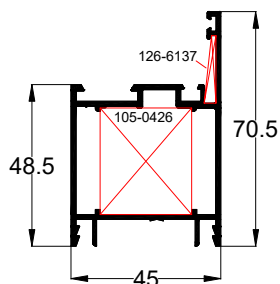
7011

0,861 kg/m



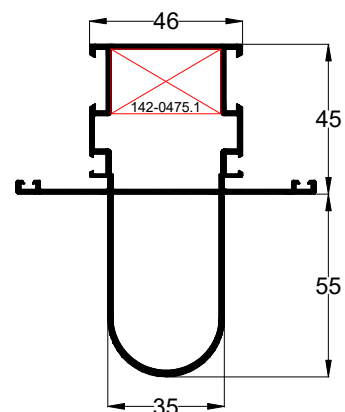
9035

1,034 kg/m



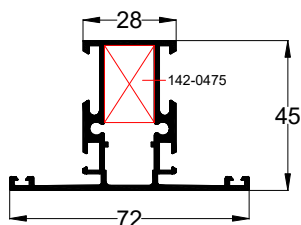
4282

1,631 kg/m



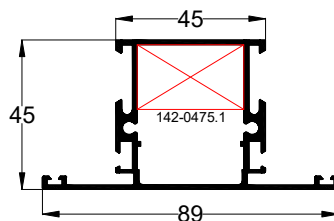
4284

1,102 kg/m



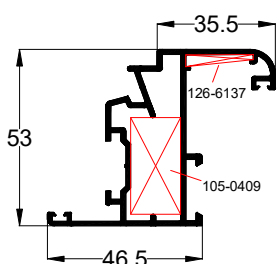
4285

1,204 kg/m



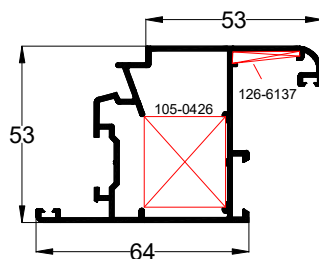
4265

1,050 kg/m



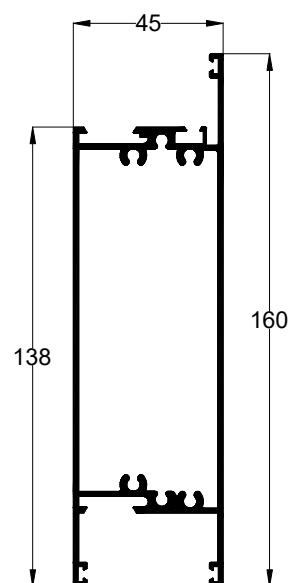
4273

1,215 kg/m



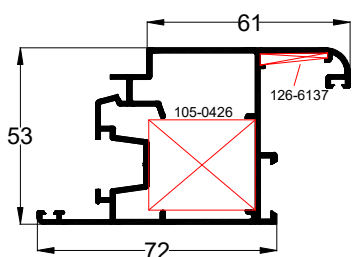
4288

2,149 kg/m



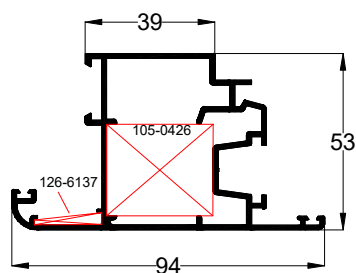
16753

1,380 kg/m



16754

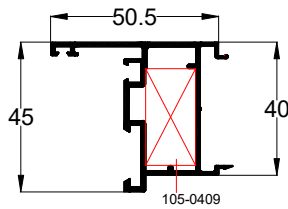
1,386 kg/m



EKU 53

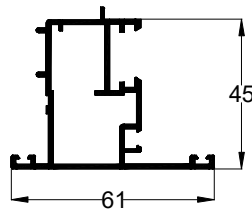
4272 - Promjena smijera

0,781 kg/m



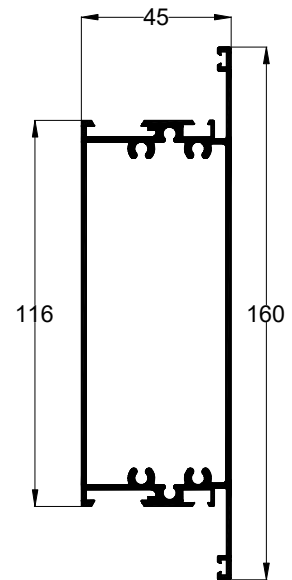
4263 - Štulp/reducir

0,885 kg/m



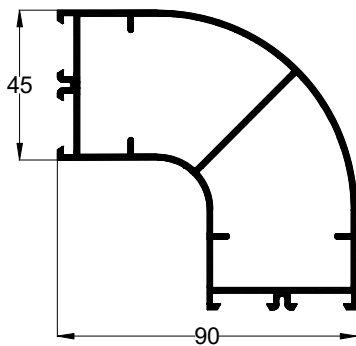
4287

2,052 kg/m



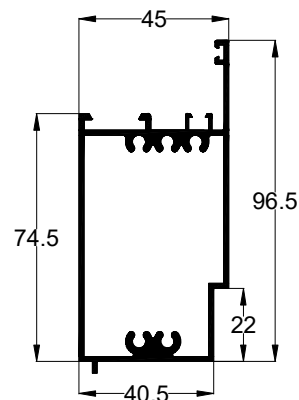
9150 -Adapter za ugao 90°

1,909 kg/m



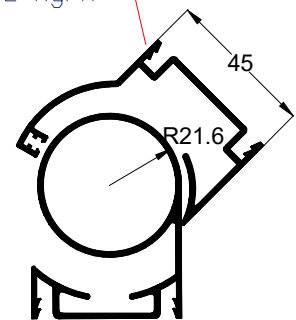
4286 - Dodatak za dno vrata

1,463 kg/m



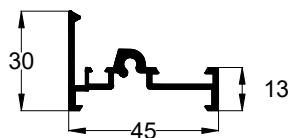
7009-Kuplung varijabilni

0,772 kg/m



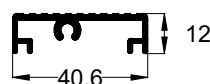
4271 - Prag

0,553 kg/m



6009 - Prag

0,405 kg/m



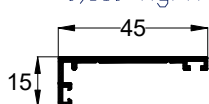
7010-Kuplung varijabilni

1,126 kg/m

Dodatak parapetu

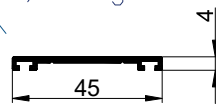
7016

0,310 kg/m



7015

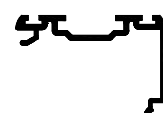
0,243 kg/m



16803

Adapter za klatna vrata

0,435 kg/m



5767-Okapnica

0,190 kg/m



6405-Potisna letva

0,160 kg/m



16802

Adapter za klatna vrata

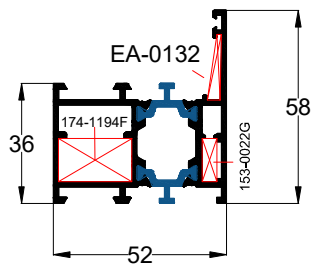
0,358 kg/m



EKU 52 TT

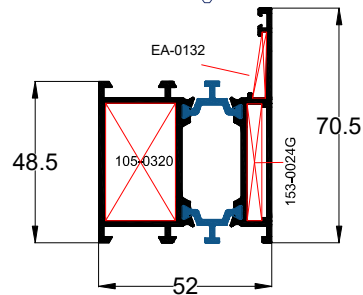
TTE616

1,319 kg/m



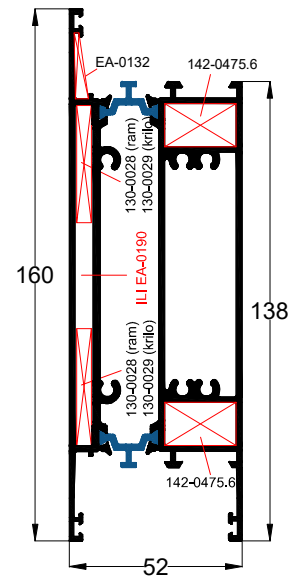
TTE512

1,484 kg/m



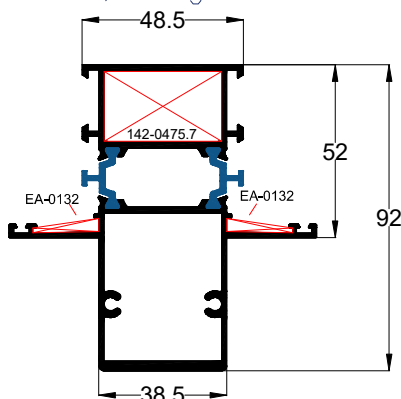
TTE521

3,738 kg/m



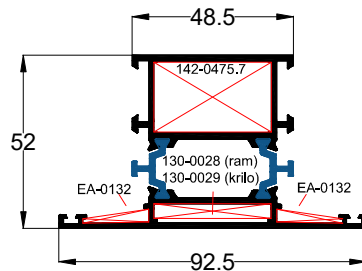
TTE529

2,285 kg/m



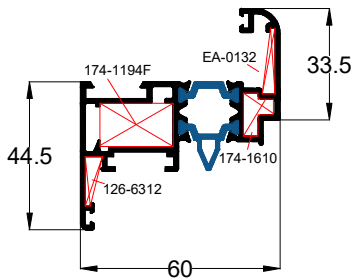
TTE513

1,682 kg/m



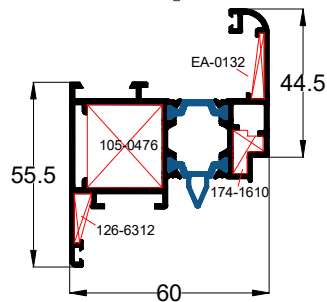
TTE502

1,353 kg/m



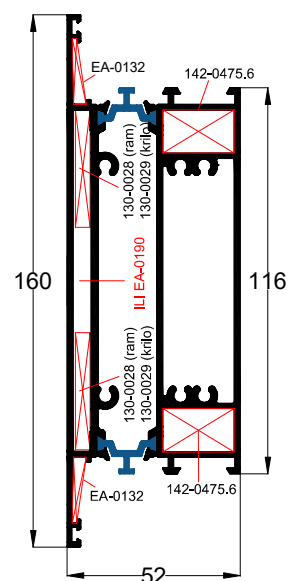
TTE613

1,545 kg/m



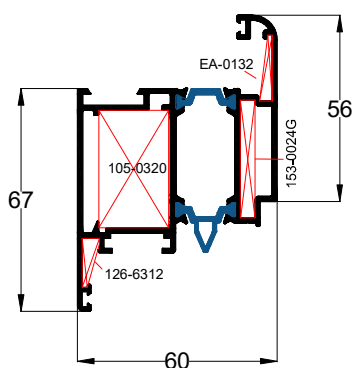
TTE520

3,628 kg/m



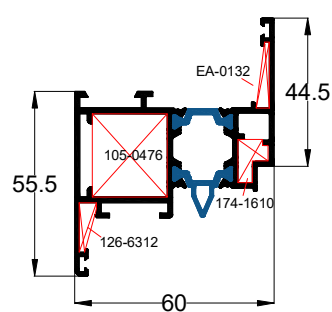
TTE514

1,778 kg/m



TTE612

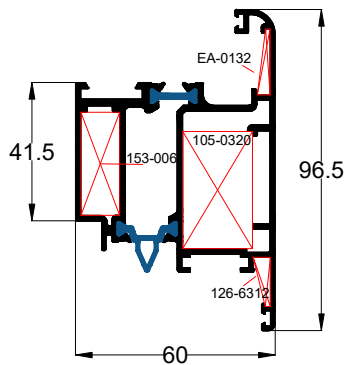
1,491 kg/m



EKU 52 TT

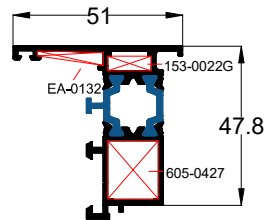
TTE609

2,045 kg/m



TTE604-Promjena smijera

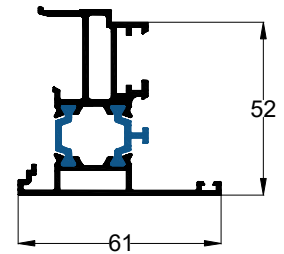
1,067 kg/m



TTE535-Štulp/reducir

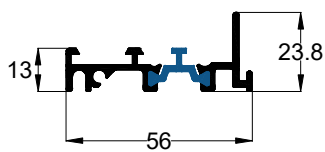
1,322 kg/m

175-T005 - čep za unutrašnje otv.
175-T006 - čep za vanjsko otv.



TTE511-Prag

0,665 kg/m



5634-Dodatak praga

0,500 kg/m



5767-Okapnica

0,190 kg/m



6007-Nosač četkice

0,369 kg/m



6405-Potisna letva

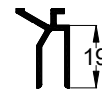
0,160 kg/m



19861

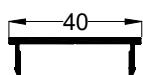
Profil ``štok na štok``

0,247 kg/m



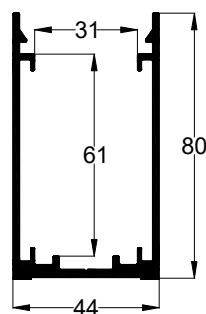
24523 - Maska ojačanja

0,270 kg/m



24524 - Ojačanje

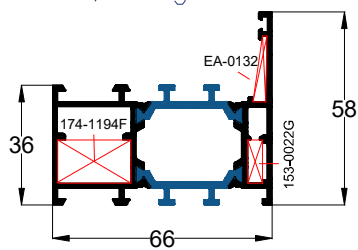
1,423 kg/m



EKU 66 TT

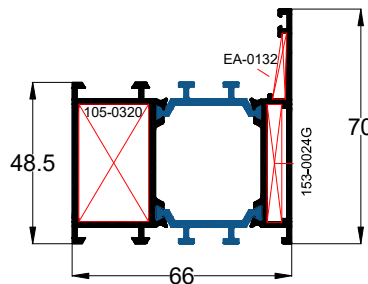
TTE816

1,431 kg/m



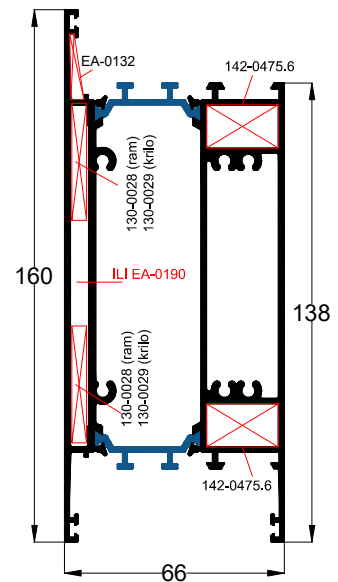
TTE712

1,665 kg/m



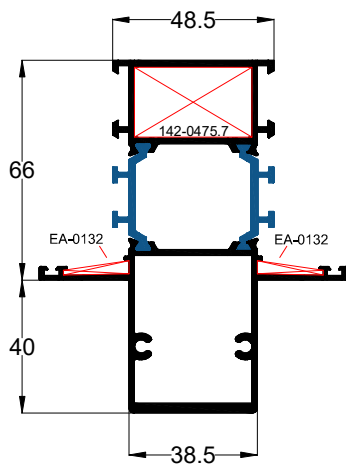
TTE721

3,850 kg/m



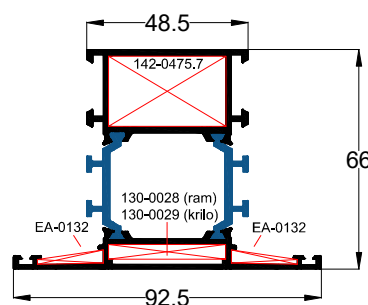
TTE729

2,389 kg/m



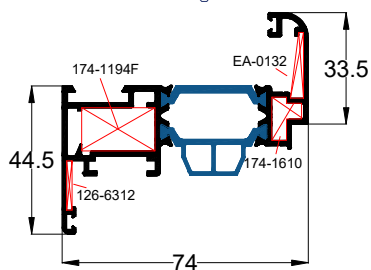
TTE713

1,786 kg/m



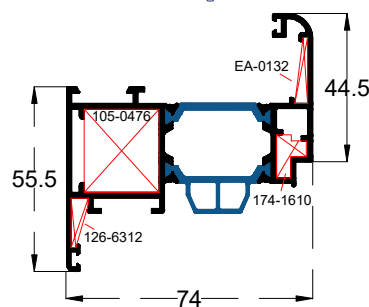
TTE773

1,406 kg/m



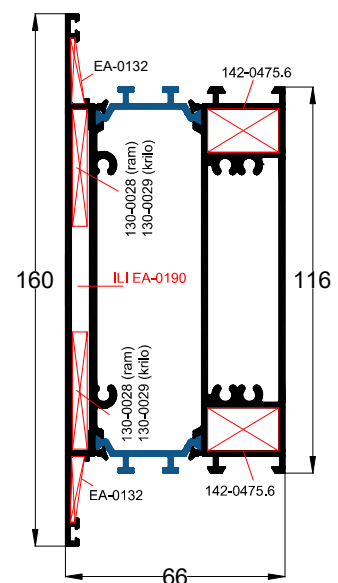
TTE813

1,641 kg/m



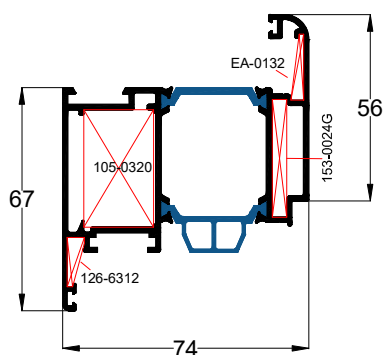
TTE720

3,740 kg/m



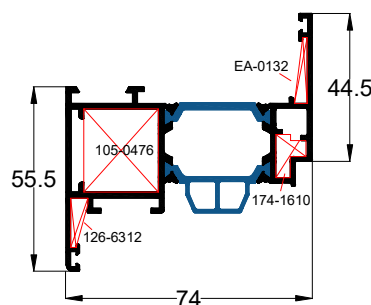
TTE777

1,853 kg/m



TTE812

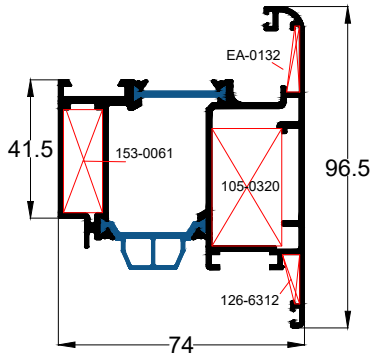
1,586 kg/m



EKU 66 TT

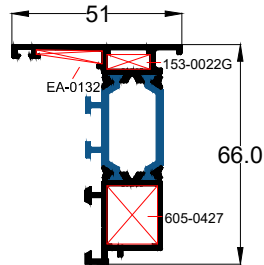
TTE809

2,139 kg/m



TTE804-Promjena smijera

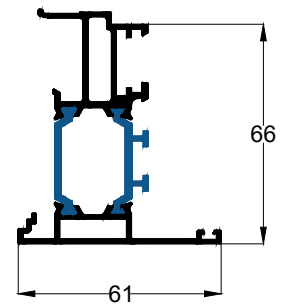
1,159 kg/m



TTE735-Štulp/reducir

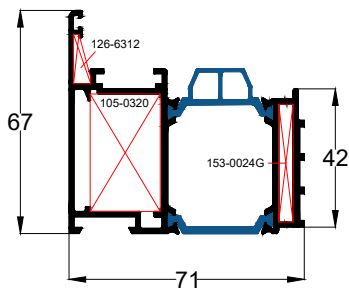
1,390 kg/m

175-T001 - čep za unutrašnje otv.
175-T002 - čep za vanjsko otv.



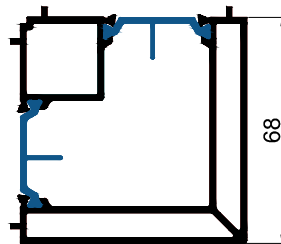
TTE66SK - Skriveno krilo

1,695 kg/m



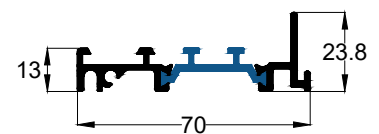
**TTE1018
Adapter za ugao 90°**

2,049 kg/m



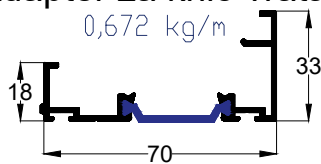
TTE711-Prag

0,721 kg/m



**TTE66-01
Adapter za krilo vrata**

0,672 kg/m



**19861
Profil ``štok na štok``**

0,247 kg/m



6007-Nosač četkice

0,369 kg/m



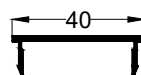
5634-Dodatak praga

0,500 kg/m



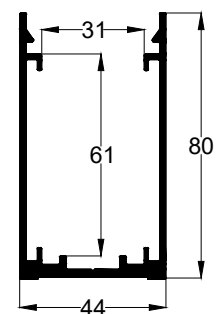
24523 - Maska ojačanja

0,270 kg/m



24524 - Ojačanje

1,423 kg/m



5767-Okapnica

0,190 kg/m



6405-Potisna letva

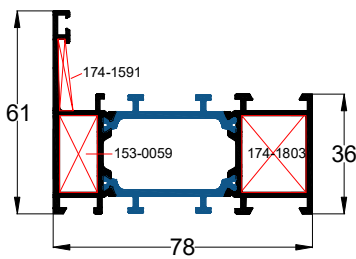
0,160 kg/m



EKU 78 TT

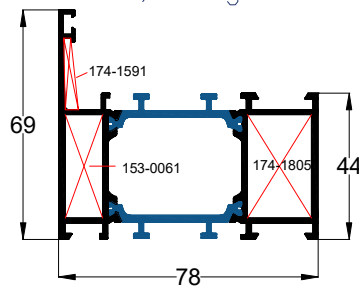
TT78.04

1,606 kg/m



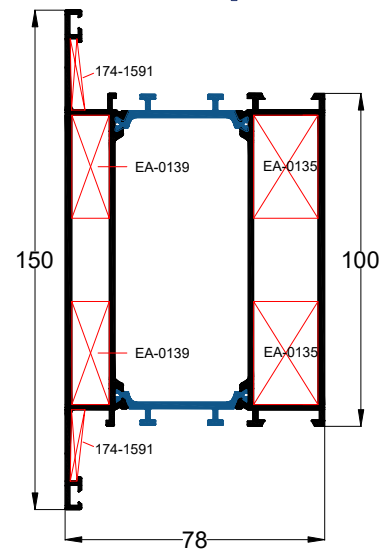
TT78.07

1,764 kg/m



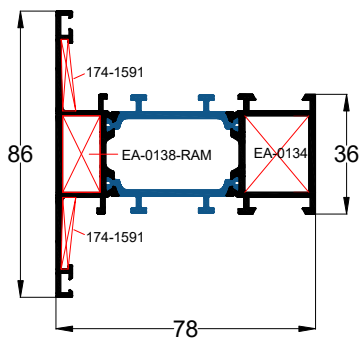
TT78.30

3,011 kg/m



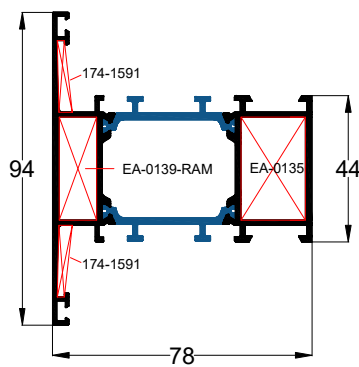
TT78.06

1,731 kg/m



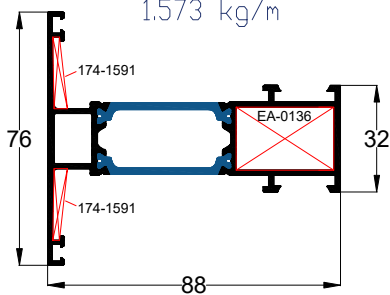
TT78.09

1,891 kg/m



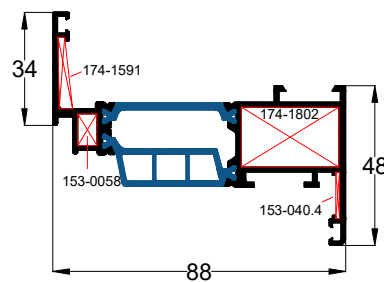
TT78.33 - za krilo

1,573 kg/m



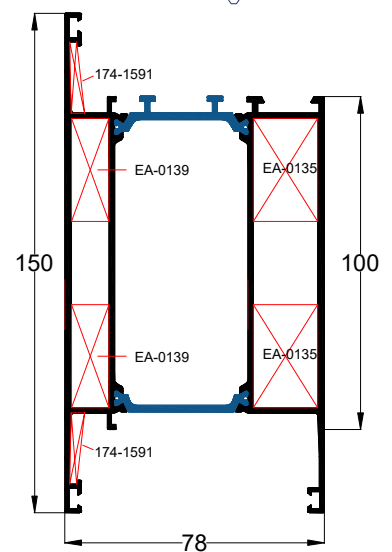
TT78.10

1,561 kg/m



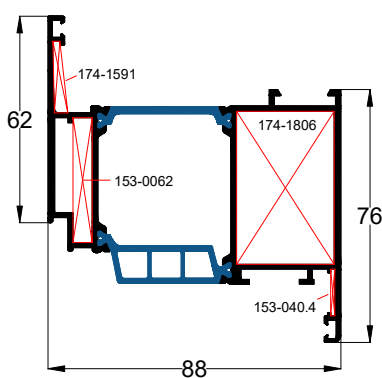
TT78.47

3,069 kg/m



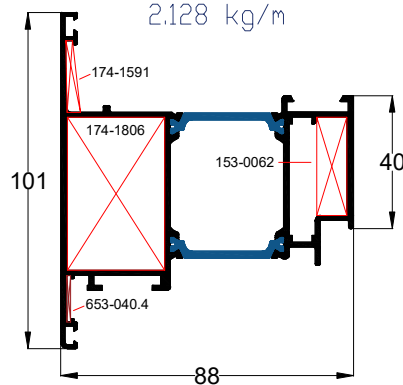
TT78.12

2,139 kg/m



TT78.38

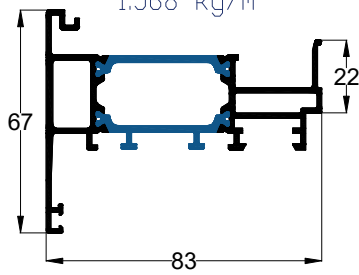
2,128 kg/m



EKU 78 TT

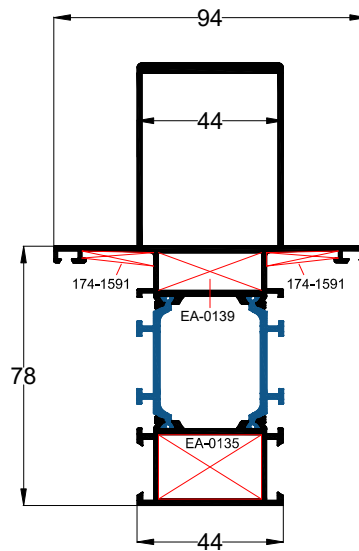
TT78.19-Štulp/reducir

1.568 kg/m



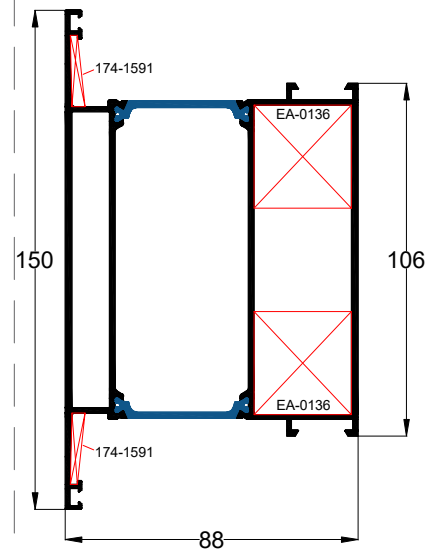
TT78.48

2.694 kg/m



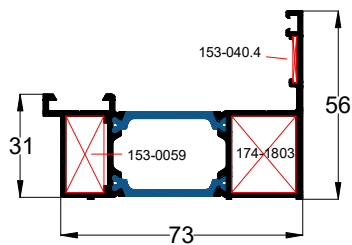
TT78.34

3.055 kg/m



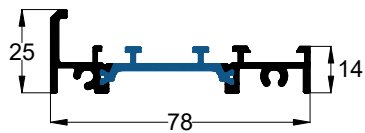
TT78.39 - Promjena smijera

1,374 kg/m



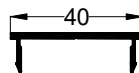
TT78.09 - Prag

1,891 kg/m



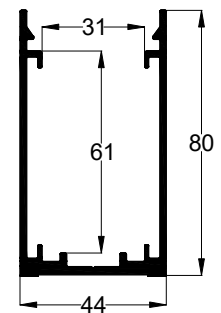
24523 - Maska ojačanja

0,270 kg/m



24524 - Ojačanje

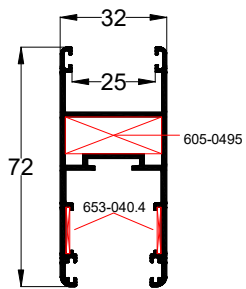
1,423 kg/m



PE 70 SL

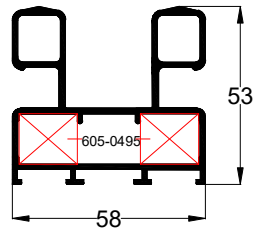
4246

1,009 kg/m



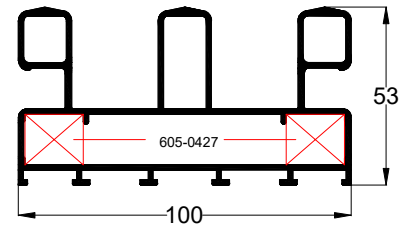
7103

1,274 kg/m



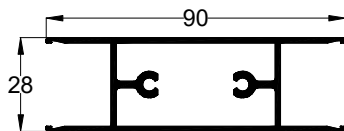
4248

2,185 kg/m



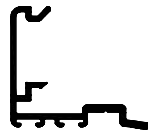
4244

1,180 kg/m



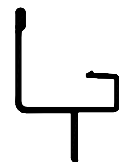
4251

0,502 kg/m



4238

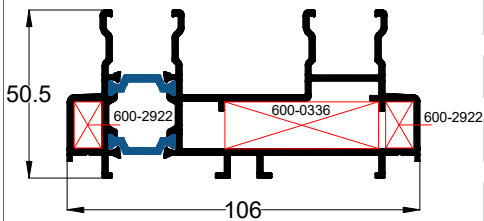
0,375 kg/m



EKU 100 SL TT

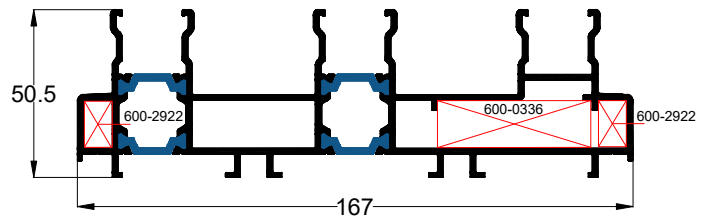
TTES01

2,195 kg/m



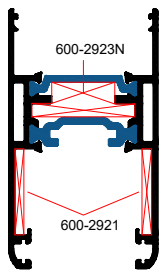
TTES03

3,397 kg/m



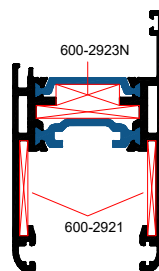
TTES02

1,645 kg/m



TTES14

1,588 kg/m



Profil za suprotna krila
19763

0,505 kg/m



24517

0,147 kg/m



19775

0,129 kg/m



19762 - Okapnica

0,344 kg/m

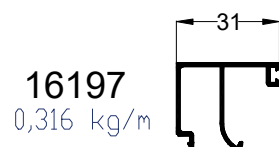
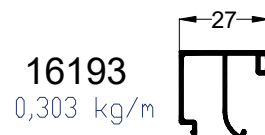
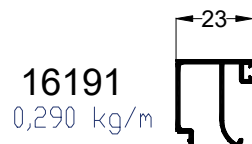
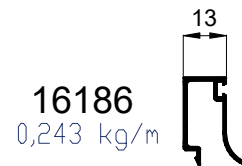
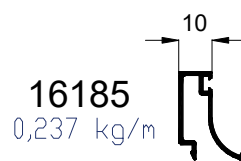


19760 - Maska

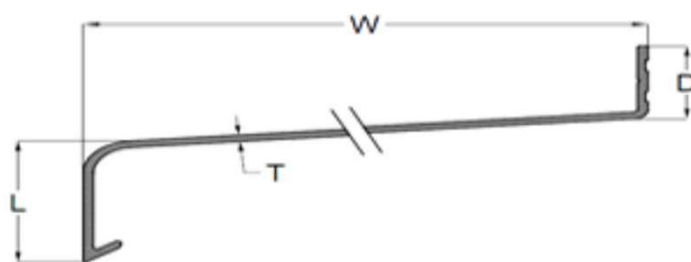
0,206 kg/m



Lajsne za staklo



Vanjske prozorske klupice



Šifra	Širina/Width (W) - mm	Debljina zida/Thickness (T) - mm	Visina prednjeg pera/Height (L) - mm	Visina zadnjeg pera/Height (D) - mm	Teoretska težina/Weight - kg/m
PK 75	75	1.3	25	15	0.396
PK 100	100	1.3	25	15	0.485
PK 125	125	1.4	25	15	0.615
PK 150	150	1.4	25	15	0.710
PK 175	175	1.5	25	15	1.862
PK 200	200	1.5	25	15	0.965
PK 225	225	1.6	25	15	1.135
PK 250	250	1.6	25	15	1.244
PK 275	275	1.7	25	15	1.436
PK 300	300	1.7	25	15	1.545

KONSTRUKCIONI SISTEMI SA TERMO MOSTOM

* EKU 52 TT

* EKU PERFEKTION

* EKU 66 TT

* EKU 78 TT



HLADNI KONSTRUKCIONI SISTEMI



* EKU 53

* EKU DOOR



ALUMINIJUM DRVO SISTEMI



* EKU WOODART

* EKU WOODART TT

* EKU WOODART TT THERMOPLUS 98

* EKU PERFEKTION WOOD



KLIZNI SISTEMI

* EKU PERFEKTION SLIDE

* EKU 100 SLIDE (TT)

* EKU 150 SLIDE TT

* PE 70 SLIDE (TT)

* EKU 170 AS TT

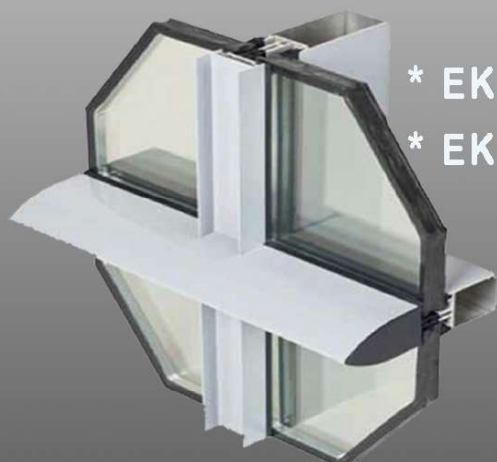
* EKU TT AS



FASADNI SISTEMI

* EKU 50 GLASS

* EKU 50 GLASS-S



HLADNI HARMO SISTEM - EKU VERANDA



Laboratorio di Prova Notificato ai sensi della Direttiva 89/106/CEE n° NB1994

RAPPORTO DI PROVA

Numero:
1994-CPD-RP0280

Data del rilascio:
2009-12-22

Richiedente:
Profilati S.p.A.
Via Pietro Galliani, 135
40059 Fossatone di Medicina (BO)

Descrizione Campione/Prodotto sottoposto a prova:
Portafinestra a due ante a battente di cui una oscillobattente commercialmente denominata "Portafinestra Eku 53" (cfr. descrizione)

Prova/e eseguita/e:
**Permeabilità all'aria
Tenuta all'acqua
Resistenza al carico del vento**

Riferimenti normativi:
EN 14351-1:2006
EN 1026:2000 EN 12207:1999
EN 1027:2000 EN 12208:1999
EN 12211:2000 EN 12210:1999

Questo Rapporto è composto da 17 pagine, compresi gli eventuali allegati, e può essere riprodotto solo integralmente

Sede legale Via Cremona 1 - 20025 Legnano (MI) - Tel. 0331 594628 - Fax 0331 458211 - www.irccos.com
Cap. Soc. € 490.000 I.V. - C.F. e P. Iva 05159630960 - Reg. Imprese Milano 05159630960 - R.E.A. 1799766

RAPPORTO DI PROVA

Numero:
1994-CPR-RP1335
(emesso in sostituzione del Rapporto di Prova n. 1994-CPR-RP180 del 20-07-2015)

Data del rilascio:
9 febbraio 2016

Richiedente:
Profilati S.p.A.
Via Pietro Galliani, 135
40059 Fossatone di Medicina (BO)

Prodotto sottoposto a prova:
Nodi di sistema per serramenti a battente della serie commercialmente denominata "Eku 66TT" (cfr. descrizione)

Prova eseguita:
Calcolo della trasmittanza termica

Riferimenti normativi:
EN 14351-1:2006+A1:2010
UNI EN ISO 10077-2:2012

Questo Rapporto è composto da 19 pagine, compresi gli eventuali allegati, e può essere riprodotto solo integralmente

Sede legale Via Achille Grandi, 17 - 21017 Samarate (VA) - Tel. 0331 594788 - www.irccos.com
Cap. Soc. € 111.526 I.V. - C.F. e P. Iva 05159630960 - Reg. Imprese Milano 05159630960 - R.E.A. 1799766
Società partecipata dal Consiglio Nazionale delle Ricerche

DOC. n° 164 REV 02/13

RAPPORTO DI PROVA

Numero:
1994-CPD-RP0900

Data del rilascio:
2013-01-22

Richiedente:
Profilati S.p.A.
Via Pietro Galliani, 135
40059 Fossatone di Medicina (BO)

Prodotto sottoposto a prova:
Nodi di sistema per serramenti a battente della serie commercialmente denominata "Eku 78 TT" (cfr. descrizione)

Prova eseguita:
Calcolo della trasmittanza termica

Riferimenti normativi:
EN 14351-1:2006+A1:2010
UNI EN ISO 10077-2:2012

Questo Rapporto è composto da 41 pagine, compresi gli eventuali allegati, e può essere riprodotto solo integralmente

Sede Legale Via Cremona 1 - 20025 Legnano (MI) - Tel. 0331 594788 - Fax 0331 458211 - www.irccos.com
Cap. Soc. € 490.000 I.V. - C.F. e P. Iva 05159630960 - Reg. Imprese Milano 05159630960 - R.E.A. 1799766
Società partecipata a maggioranza dal Consiglio Nazionale delle Ricerche

DOC. n° 164 REV 01/12

CERTIFICATE

for a COATING APPLICATOR



SEASIDE

hereby authorises

PROFILATI BH
Ul. Kasindolskog Bataljona 1
71123 Istocna Ilidza
Bosnia and Herzegovina

to use the quality label in conformity with the
QUALICOAT 2022 Specifications, applicable from 1 January 2022

Licence No.: **5101**

Date of Granting: **06.07.2021**

Valid until: **31.12.2022**

Zurich, 1 January 2022

QUALICOAT

Ivo Vermeeren
President



Sue C. C. Paredi
Managing Director





PROFILATI BH

ahead of all...



GRUPPO PROFILATI

WE ARE ALUMINIUM

Kasindolskog bataljona br. 1 | Istočna Ilidža, I. Sarajevo

Tel.: +387 (33) 821 095 | +387 (33) 821 096

E-mail: info@profilatibh.ba | web: www.profilatibh.ba